

Job/Client Name:	
Location:	
Notes:	

Alliance products are designed and built in the USA. 

Round Tapered Fiberglass Light Poles

Anchor Base

Standard, Intermediate, Heavy, and Extra Heavy Duty

Product Offering Includes:

- Anchor base poles to fit your specific wind zone and loading requirements.
- 13-35' above ground mounting heights.¹
- 3-Layers of protection against UV degradation. Includes thermally bonded outer coating.
- Surface finish options include natural and smooth.
- 2½" x 5" Standard hand Hole Cover (4" x 6" and 4" x 12" available).²
- Anchor Bases available with 7½"-14" Bolt Circle (depending on pole).
- Bolt Covers included or Base Shrouds Available.
- 2-3/8", 3" Tenons or Top Cap available.
- Standard Colors in black, bronze, and gray (other colors available by request).
- Light Weight, Non-Conductive, and Non-Corrosive.

Product Numbers and EPA Ratings^{2,3}

Standard Duty

Mounting Height	Catalog Number	Calculated Effective Projected Area (EPA) ^{2,3}							Weight of the Pole ⁵
		90 mph	100 mph	110 mph	120 mph	130 mph	140 mph	150 mph	
13	A5TS13F00N##GXHH	8.6	6.5	4.9	3.7	2.8	2.7	2.2	30
15	A5TS15F00N##GXHH	8.3	6.2	4.6	3.3	2.5	2.4	2.0	34
18	A5TS18F00N##GXHH	7.7	5.5	3.9	2.6	2.1	1.9	1.5	42
20	A6TS20F00N##GXHH	7.7	5.4	3.7	2.5	2.0	1.9	1.5	45
22	A6TS22F00N##GXHH	7.4	5.0	3.5	2.7	2.1	2.0	1.5	54
24	A7TS24F00N##GXHH	7.6	5.1	3.6	2.8	2.2	2.0	1.6	61
25	A7TS25F00N##GXHH	8.2	5.5	4.0	3.1	2.4	2.3	1.8	67
30	A8TS30F00N##GXHH	8.8	6.1	4.6	3.5	2.8	2.6	2.0	82



Alliance™ Round Tapered, 30', anchor base, fiberglass light pole.

Visit alliancecompositesinc.com for a full list of products and EPA ratings up to 180 mph.



Responsive

Alliance™ provides dependable service from quote to delivery. Our experienced product experts and attractive lead times combine to deliver industry leading service.



Lasting

Our Alliance™ light poles have superior UV protection, which creates an ultra-low maintenance product. Fiberglass is non-conductive and non-corrosive creating ideal installation and service conditions.



Versatile

Alliance™ offers options for nearly every climate and application. Products are lightweight, easy to install, and configurable to fit the needs of any project.

Product Numbers and EPA Ratings^{2,3}

Intermediate Duty

Mounting Height	Catalog Number	Calculated Effective Projected Area (EPA) ^{2,3}							Weight of the Pole ⁵
		90 mph	100 mph	110 mph	120 mph	130 mph	140 mph	150 mph	
13	A5TI13F00N##GXHH	11.9	9.1	7.1	5.5	4.4	4.2	3.5	34
15	A5TI15F00N##GXHH	11.7	8.9	6.8	5.2	4.2	4.0	3.3	38
18	A5TI18F00N##GXHH	11.1	8.2	6.1	4.6	3.7	3.5	2.9	45
20	A6TI20F00N##GXHH	10.9	8.0	5.9	4.3	3.6	3.4	2.8	47
22	A6TI22F00N##GXHH	10.7	7.6	5.7	4.5	3.7	3.5	2.9	55
24	A7TI24F00N##GXHH	10.8	7.6	5.8	4.6	3.7	3.5	2.9	65
25	A7TI25F00N##GXHH	11.8	8.3	6.4	5.1	4.2	4.0	3.3	76
30	A8TI30F00N##GXHH	13.7	10	7.9	6.3	5.1	4.9	4.0	93

Heavy Duty

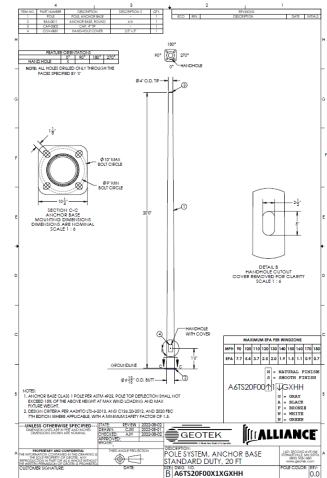
Mounting Height	Catalog Number	Calculated Effective Projected Area (EPA) ^{2,3}							Weight of the Pole ⁵
		90 mph	100 mph	110 mph	120 mph	130 mph	140 mph	150 mph	
13	A5TH13F00N##GXHH	15.2	11.8	9.3	7.4	6.1	5.8	4.9	38
15	A5TH15F00N##GXHH	15.1	11.7	9.1	7.2	5.8	5.6	4.7	42
18	A5TH18F00N##GXHH	14.5	11.0	8.5	6.5	5.4	5.1	4.3	48
20	A6TH20F00N##GXHH	14.3	10.7	8.1	6.2	5.2	5.0	4.2	48
22	A6TH22F00N##GXHH	14.0	10.3	7.9	6.4	5.3	5.1	4.2	56
24	A7TH24F00N##GXHH	14.1	10.3	7.9	6.4	5.3	5.0	4.2	68
25	A7TH25F00N##GXHH	15.8	11.6	9.1	7.4	6.1	5.9	4.9	85
30	A8TH30F00N##GXHH	20.1	15.3	12.2	9.9	8.3	7.9	6.7	103

Extra Heavy Duty

Mounting Height	Catalog Number	Calculated Effective Projected Area (EPA) ^{2,3}							Weight of the Pole ⁵
		90 mph	100 mph	110 mph	120 mph	130 mph	140 mph	150 mph	
13	A5TE13F00N##GXHH	18.5	14.5	11.5	9.3	7.6	7.3	6.2	40
15	A5TE15F00N##GXHH	18.4	14.3	11.3	9.0	7.4	7.1	6.1	44
18	A5TE18F00N##GXHH	17.9	13.7	10.7	8.4	7.0	6.7	5.7	50
20	A6TE20F00N##GXHH	17.5	13.4	10.3	8.1	6.8	6.5	5.5	50
22	A6TE22F00N##GXHH	17.2	12.9	10.0	8.2	6.8	6.6	5.5	59
24	A7TE24F00N##GXHH	17.4	12.9	10.1	8.2	6.9	6.6	5.5	71
25	A7TE25F00N##GXHH	21.8	16.5	13.2	10.7	9.1	8.7	7.4	89
30	A8TE30F00N##GXHH	29.9	23.2	18.7	15.4	13.0	12.5	10.6	108



Alliance™ Round Tapered, 25', anchor base, fiberglass light pole.



Drawings available at alliancecompositesinc.com

Visit alliancecompositesinc.com for a full list of products and EPA ratings up to 180 mph.

Pole Specifics

Product Finish⁷

Poles are available in a Natural and Smooth finish. All round poles include 3-layers of UV protection, including a thermally bonded outer coating. Colors include black, bronze, and gray. Custom colors available.

Pole Shaft

Poles are filament wound utilizing continuous glass fiber reinforcement within in a thermoset resin system. This process allows for flexibility to design poles with targeted strength profiles, resulting in a line of poles providing optimized performance, weight, and cost across a variety of applications.

Tenons and Top Caps

Aluminum tenon or plastic top cap is shipped assembled to the pole. For top mount luminaires, 2-3/8" and 3" diameter tenons are standard. Custom tenons available.

I.D. Tag

Laser etched I.D. tag available, riveted to the outside of the pole.

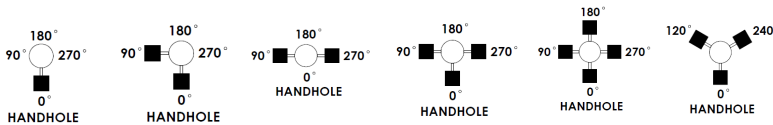


Drilling⁶

All poles are factory drilled to specifications outlined in the manufacturing drawing.

Mounting Options⁵

Tenon or Side Drill Mount applications available. Side Drill orientation and luminaire drilling locations and patterns must be supplied at time of order.



Hand Hole Options^{2,7}

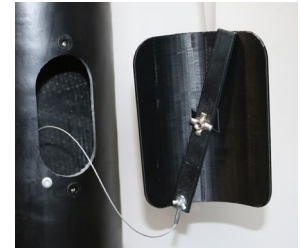
Hand Hole and Cover²

2½" x 5" Hand Hole is standard. 4" x 6" and 4" x 12" Hand Holes available on most poles. The EPA ratings may be affected when using Hand Holes other than 2½" x 5". Covers are made of a durable, weather resistant material, color matched to the pole. Hand hole located at 24" above ground level.



Backer Bar and Tether

Backer Bar and Tether available (individually or as a set) on our 4" x 6" and 4" x 12" Hand Hole Covers.



Pole Options^{2,7}

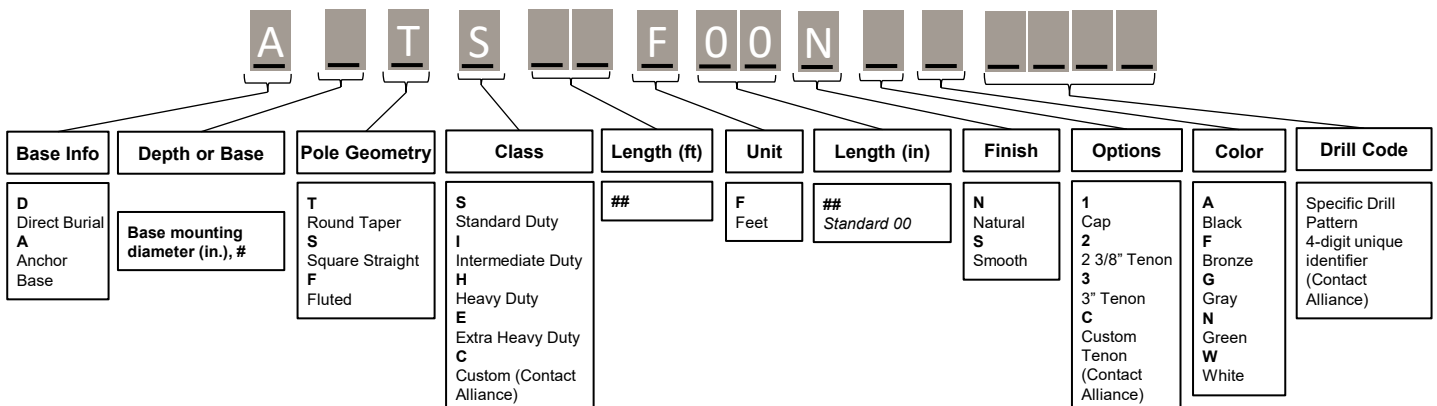
- 2½" x 5" Hand Hole Cover (Standard)
- 4" x 6" Hand Hole Cover
- 4" x 6" Universal Hand Hole Cover, 8" Backer Bar
- 4" x 12" Universal Hand Hole Cover, 14" Backer Bar
- Hand Hole Tether

Options

- CAL-0001 Stamped Wind Load Calculation

Catalog Number

Example: **A6TS30F00N2G0001**: Anchor Base, Standard Duty, 30', Natural Finish, with 2 3/8" Tenon in Gray.



Anchor Base References⁸

Anchor Base

Bases are made from corrosion resistant, heat-treated aluminum, providing a light weight yet strong anchor base solution. Bolt circle ranges from 7.5" to 14", depending on base used. Anchorage kits available. Direct burial poles also available.



Base Covers

Bolt Covers and Base Shrouds

Bolt Covers are provided with all poles unless a 1 or 2-piece Base Shroud is ordered. Base Shrouds are color matched to the pole.



Anchor Base Description

18' and shorter poles	5" AB w/ Sleeve, 7.5"-10" BC
19' - 23' poles	6" AB w/ Sleeve, 9"-11" BC
24' - 27' poles	7" AB w/ Sleeve, 10"-11" BC
28' - 33' poles	8" AB w/ Sleeve, 11"-12" BC
34' - 35' poles	9" AB w/ Sleeve, 12.5"-14" BC

Other Base options available, please contact factory, lead time may be affected.

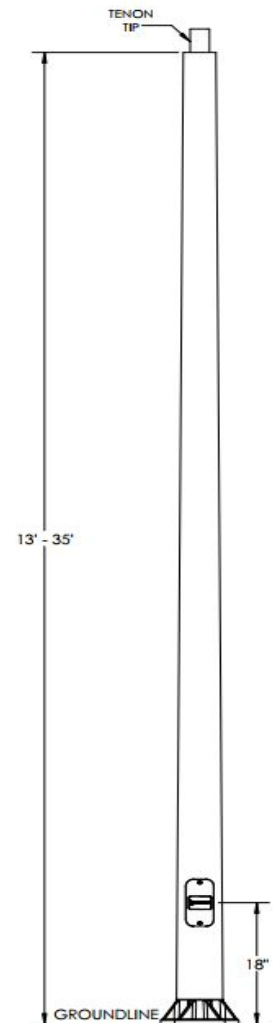
Accessories⁷

Catalog Number	Description
COV-0018- #	Base Shroud 5" 1-Piece, Fiberglass, for use with 18' and shorter poles
COV-0028- #	Base Shroud 5" 2-Piece, Fiberglass, for use with 18' and shorter poles
COV-0017- #	Base Shroud 6" 1-Piece, Fiberglass, for use with 20'-23' poles
COV-0027- #	Base Shroud 6" 2-Piece, Fiberglass, for use with 20'-23' poles
COV-0031- #	Base Shroud 7" 1-Piece, Fiberglass, for use with 24'-25' poles
COV-0032- #	Base Shroud 7" 2-Piece, Fiberglass, for use with 24'-25' poles
COV-0015- #	Base Shroud 8" 1-Piece, Fiberglass, for use with 26'-30' poles
COV-0024- #	Base Shroud 8" 2-Piece, Fiberglass, for use with 26'-30' poles
COV-0029- #	Base Shroud 9" 1-Piece, Fiberglass, for use with 31'-35' poles
COV-0030- #	Base Shroud 9" 2-Piece, Fiberglass, for use with 31'-35' poles
COV-0003	Bolt Covers, Base Bolt Cover, 5"- 8", each, 4 needed, included with AB if no Base Shroud
COV-0037	Bolt Covers, Base Bolt Cover, 9"- 10", each, 4 needed, included with AB if no Base Shroud
HDWR-AP-AB08	¾" x 18" x 3", F1554 grade 55 L-shape anchor bolts, 3.5" thread hot dip galvanized with (2) heavy hex nuts & (2) USS flat washers, kit of 4 bolts w/washers/nuts
HDWR-AP-AB12	1" x 24" x 3", F1554 grade 55 L-shape anchor bolts, 4" thread hot dip galvanized with (2) heavy hex nuts & (2) USS flat washers, kit of 4 bolts w/washers/nuts
HDWR-AP-AB13	1" x 30" x 4", F1554 grade 55 L-shape anchor bolts, 4" thread hot dip galvanized with (2) heavy hex nuts & (2) USS flat washers, kit of 4 bolts w/washers/nuts
HDWR-AP-AB14	1" x 36" x 4", F1554 grade 55 L-shape anchor bolts, 4" thread hot dip galvanized with (2) heavy hex nuts & (2) USS flat washers, kit of 4 bolts w/washers/nuts

designates color, 2 = Gray, 3 = Bronze, 5 = Black.

Footnotes

- ¹Poles taller than 35' are available, please contact factory.
- ²EPA ratings shown are for light pole with a standard 2½" x 5" Hand Hole. EPA ratings with a 4" x 6" or a 4" x 12" Hand Hole may vary. Custom color poles (Non-standard) will have a single fastener Hand Hole Cover with a backer bar, matching the color of the pole.
- ³Design criteria per AASHTO LTS-6-2013, with a minimum safety factor of 1.5 per ANSI C136.20-2012, 3 second gust wind speeds per ASCE 7-16, and velocity conversions per IBC 1609.3.1, 2018. Lighting installations for side and top mounting of luminaires with effective projected area (EPA) not to exceed maximum allowable loading of the specified pole in its installed geographic location. EPA ratings available up to 180 mph or for EPA ratings calculated per AASHTO LRFD or other, alternate methods, contact sales@alliancecompositesinc.com for more information.
- ⁴Always consult local authorities to determine maximum wind velocities, gusting and unique wind conditions for each specific application. Allowable pole EPA for jobsite wind conditions must be equal to or greater than the total EPA for fixtures, arms, and accessories attached to the pole. Responsibility lies with the specifier for correct pole selection. Installation of poles without luminaires or attachment of any unauthorized accessories is discouraged and shall void the manufacturer's warranty. Wind speeds and listed EPAs are for ground-level mounted installations only. Poles mounted on structures (bridges, buildings or other) must consider vibration and coefficient of height factors beyond this general guide. Consult all relevant local codes and federal standards. Extreme wind events like Hurricanes or Tornadoes may expose poles to flying debris, wind shear or other detrimental effects not included in wind velocity ratings.
- ⁵Pole weights are approximate, +/- 10% of stated value.
- ⁶Alliance is not responsible for luminaire to pole compatibility. Customer to provide drill patterns. These will be available on the provided, engineering drawing, prior to PO acceptance.
- ⁷Longer lead times may apply, contact factory. # designates color, 2 = Gray, 3 = Bronze, 5 = Black.
- ⁸Contractor is responsible for bolt selection depending on their individual criteria for the foundation of the anchor base per local code. Installation of Alliance poles on existing structures are the sole responsibility of the installer.



All products supported by best-in-class Engineering and Customer Service teams.

All specifications are subject to change without notice. Please visit alliancecompositesinc.com for latest information. Consult GEOTEK with specific inquiries.

GEOTEK
1421 Second Avenue, NW
Stewartville, MN 55976

All rights reserved. No part of this document may be reproduced in any form without the prior written permission of GEOTEK.

www.geotek.com
507-533-6076

Copyright © 2024, GEOTEK.