

4

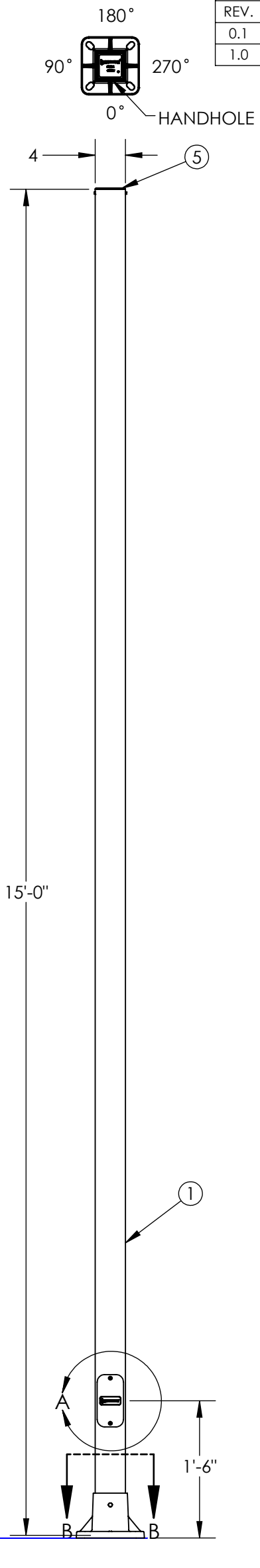
3

2

1

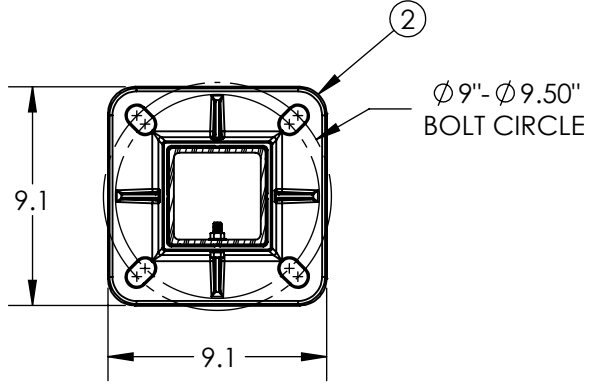
| ITEM NO. | DESCRIPTION | QTY. |
|----------|------------------------------|------|
| 1 | BEAM, PULTRUDED STOCK | 1 |
| 2 | ANCHOR BASE, 4" SQUARE | 1 |
| 3 | HEX BOLT | 1 |
| 4 | FLANGE NUT, SERRATED | 1 |
| 5 | TOP CAP | 1 |
| 6 | HEX SCREW, SELF-TAPPING | 2 |
| 7 | RIVET NUT, 1/4-20 | 2 |
| 8 | HANDHOLE COVER | 1 |
| 9 | PHILLIPS SCREW, 1/4"-20x3/4" | 2 |

| REVISIONS | | | | |
|-----------|-----------------------------------|-----------|----------|------|
| REV. | DESCRIPTION | DATE | INITIALS | ECO |
| 0.1 | UPDATE NOTES | 7/11/2023 | AJH | 6243 |
| 1.0 | UPDATE EPA TABLE AND SHEET FORMAT | 4/9/2024 | ARK | 6714 |

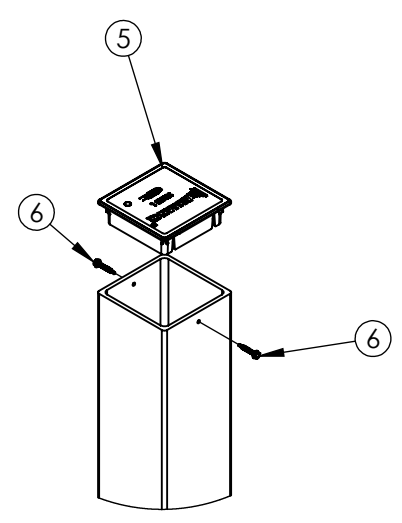


| FEATURE ORIENTATIONS | | | | |
|----------------------|----|-----|------|------|
| | 0° | 90° | 180° | 270° |
| HAND HOLE | X | | | |

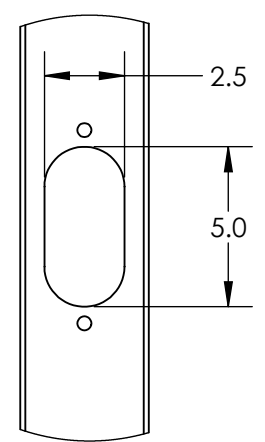
NOTE: ALL HOLES DRILLED ONLY THROUGH THE FACES SPECIFIED BY 'X'



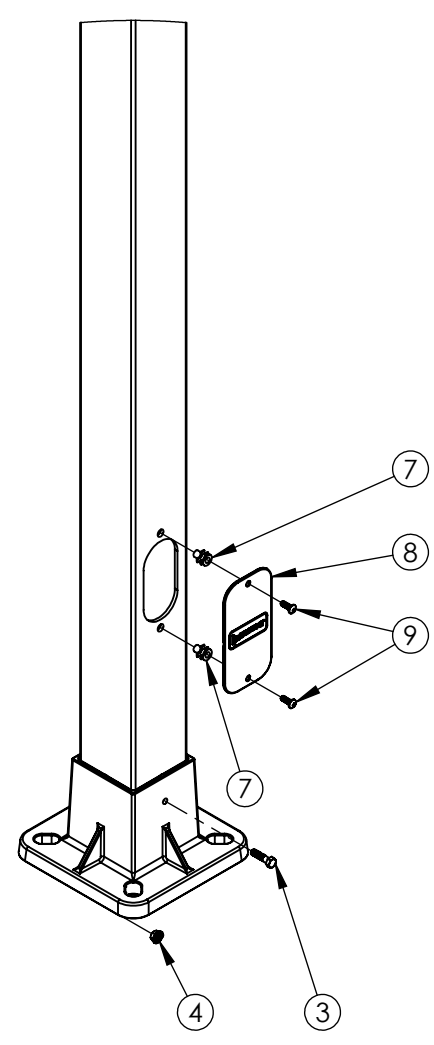
SECTION B-B
SCALE 1 : 8



DETAIL C
TOP CAP ASSEMBLY
SCALE 1 : 8



DETAIL A
HANDHOLE CUTOUT
COVER REMOVED FOR CLARITY
SCALE 1 : 6



DETAIL D
BASE AND COVER
ASSEMBLY

- NOTES:
1. ANCHOR BASE CLASS 1 POLE PER ASTM 4923. POLE TOP DEFLECTION SHALL NOT EXCEED 15% OF THE ABOVE GROUND HEIGHT AT MAXIMUM WIND LOADING AND MAXIMUM FIXTURE WEIGHT.
 2. DESIGN CRITERIA PER AASHTO LTS-6-2013 WITH A MINIMUM SAFETY FACTOR OF 1.5 PER ANSI C136.20-2012.
 3. WIND SPEEDS DEFINED AS 3 SECOND GUST PER ASCE 7-16 WITH VELOCITY CONVERSIONS PER 2018 IBC 1609.3.1.

| | | | | | | | | | | |
|---------------------------------|---------------|----------|-----|-----|-----|-----|-----|-----|-----|-----|
| △ 1.0 | BUILD | STANDARD | | | | | | | | |
| | FINISH | SMOOTH | | | | | | | | |
| MAXIMUM EPA PER WINDZONE | | | | | | | | | | |
| MPH | 90 | 100 | 110 | 120 | 130 | 140 | 150 | 160 | 170 | 180 |
| EPA | 12.3 | 9.2 | 6.9 | 5.1 | 3.8 | 3.5 | 2.5 | 1.7 | 1 | 0.5 |

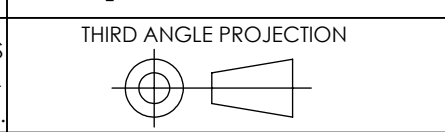
A4SS15F00S1 ↓ GXHH

G = GRAY
A = BLACK
F = BRONZE
W = WHITE
N = GREEN

---UNLESS OTHERWISE SPECIFIED---
 DIMENSION UNITS ARE IN FEET AND INCHES
 DIMENSIONS SHOWN ARE NOMINAL

| | | |
|-----------|----------|------------|
| STATE: | RELEASED | 2024-04-15 |
| DRAWN: | CJM | 2023-06-22 |
| CHECKED: | IAB | 2024-04-12 |
| APPROVED: | ARK | 2024-04-15 |
| REPLACES: | - | |

PROPRIETARY AND CONFIDENTIAL
 THE INFORMATION CONTAINED IN THIS DRAWING IS THE SOLE PROPERTY OF GEOTEK. ANY REPRODUCTION IN PART OR AS A WHOLE WITHOUT THE WRITTEN PERMISSION OF GEOTEK IS PROHIBITED.



DESCRIPTION:
**POLE SYSTEM, ANCHOR BASE
 STANDARD DUTY, 15 FT**

1421 SECOND AVE NW
 STEWARTVILLE, MN 55976
 (800) 533-1680
 www.geotek.com

CUSTOMER SIGNATURE: _____ DATE: _____

-REFERENCES-
 alliancecompositesinc.com/warranty
 geotek.com/termsandconditions

SIZE: DWG. NO.
B A4SS15F00S1XGXHH

POLE COLOR: REV:
 _____ 1.0